

FESTIVE PASTORALE

John C. Dare

PERFORMANCE NOTES: This piece is most effective when the *melody* and *harmony* parts use different tone colors (bells and chimes), but it may be performed with one tone color. Bells or chimes may ring either part. For both the Handbells Used Chart and the score, all *melody* notes are identified with stems up and all *harmony* notes are shown as stemmed down.

3 Octaves
Handbells and/or Handchimes

Melody notes stemmed up ♯ : 17



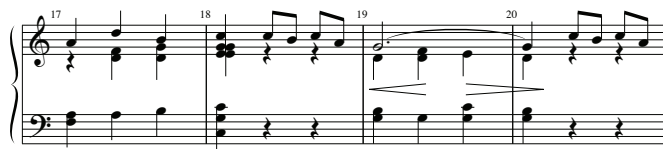
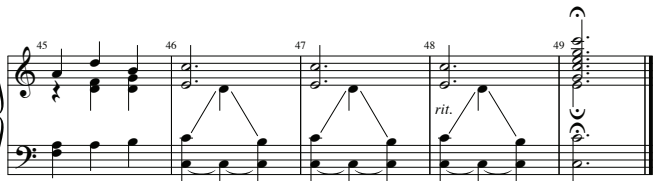
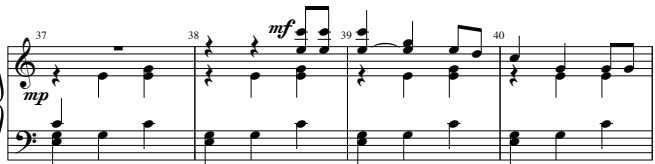
Harmony notes stemmed down ♯ : 17

Moderato ♩ = 100



Copyright © 2003 by GIA Publications, Inc., 7404 S. Mason Ave., Chicago, IL 60638
International Copyright Secured All Rights Reserved Printed in the U.S.A.
Photocopying of this publication without permission of the publisher is a violation of the U.S. Code of Law for which the responsible individual or institution is subject to criminal prosecution. No one is exempt.

G-6009



Summary

Festive Pastoral

3 Octaves

Level 2

Bells and Chimes

GIA Publications, Inc.

G-6009

\$2.95

Lovely for Christmas Eve
Suitable for weddings