
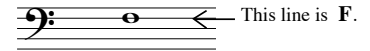


Worksheets for the Bass Clef

INTRODUCING THE BASS CLEF

This sign  is called the **bass clef**.

The two dots mark the 4th staff line to show that the note on this line is named **F**.




This clef is also called the **F clef**.

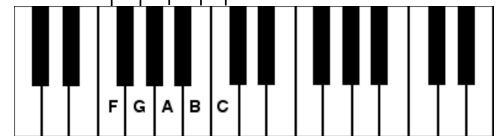
Moving down from this line,
the names of the other lines
and spaces on the bass clef are:

Moving up from this line,
the names of the other lines
and spaces on the bass clef are:



F E D C B A G F G A B C

The  is generally used for tenor and bass voices, many instruments, and handbell music from C#5 down.



LEARNING NAMES OF NOTES IN SPACES BASS CLEF

The names of the notes in spaces, named from the bottom to the top of the staff, are A - C - E - G.

To help remember the names, think of this sentence:
All Cows Eat Grass



Using the guide above, print the letter name of each note on the line under the note.

