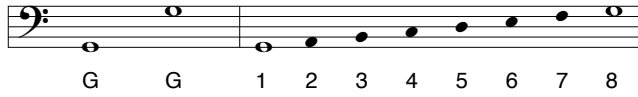


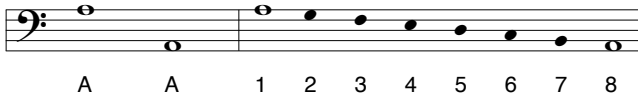
## UNDERSTANDING OCTAVES BASS CLEF

The two notes shown below have the same letter name but are located in different places on the staff. The musical distance between these two notes is measured by counting every line and space from one note to the other, including the line and space used by the actual notes.

Pitches that are 8 staff degrees apart are called an **octave**.

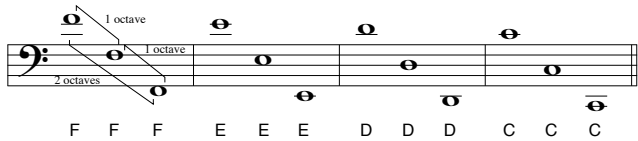
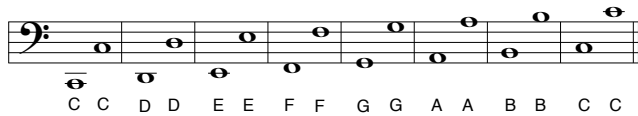


The distance of an octave can be measured in either direction.

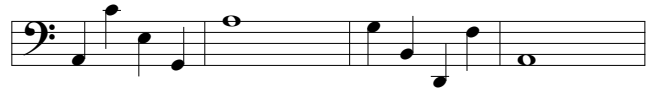


### OCTAVES IN THE BASS CLEF

One note of the octave is on a line and the other one is in a space.



## GRAND REVIEW: NOTES IN THE BASS CLEF



## LEARNING ABOUT THE GRAND STAFF

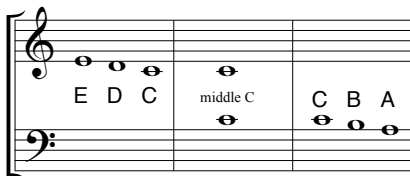
Music that uses both high notes and low notes is written on a pair of staves.\* The top staff has a treble clef sign and the bottom staff has a bass clef sign; this combination of two staves is called a **grand staff**.

The left side of the grand staff often has a brace or bracket linking the two staves together and the bar lines usually extend through both staves.



\*Staves is the plural of staff.

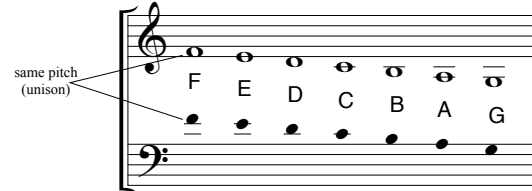
On a grand staff the note "C" on the 1st line *below* the staff with a treble clef has the *same pitch* as the note "C" on the 1st line *above* the staff with a bass clef. This note is called **middle C**.



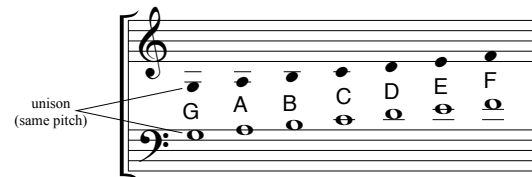
Middle C represents the same pitch regardless of the staff on which it appears.

Learning about the Grand Staff - page 2

Other notes on the grand staff *also look different* in the treble and bass clefs even though they represent the same pitch. Two notes that are the same pitch are called a **unison**.



Music for keyboard instruments, choirs, and some handbell ensembles uses these notes in either clef. It is important to understand that these notes are the same regardless of their position on staff.



Music for full bell choirs always has *middle C* in the *bass clef* and avoids the other ledger lines between the staves of the grand staff.

The notes in each measure below illustrate *octaves between* the staves of the grand staff. Notice how these differ from the unisons shown above.

